



Chinatown Connections

NYC/EDC



CCWG # 2 – 05/08/2024

Agenda

Chinatown Connection Working Group Meeting # 2

- Recap Gateway Subgroup # 1
- Introduce Chinatown Connections Pre-Design Engagement Consultant
- Preview Public Meeting # 1
- Park Row SIP Update
- Park Row Discussion with NYPD

Welcome Gateway Subgroup # 1 Recap



Welcome Gateway Subgroup # 1 (4/25)

Recap

- Desire to diversify subgroup's membership
- Need to acknowledge previous attempts at a Welcome Gateway and lessons learned
- Clarify and share DCLA's artist selection process and timeline
- Discussed required elements of Gateway Design Brief
- Need to craft fundraising strategy sooner than later
- Think!Chinatown's exhibition on culturally sensitive landmarks and placemaking
 - Exhibition beginning on June 4th
 - Aligning engagement consultant's precedent research with Think!Chinatown's work



Introducing...



Meet the Team

 Public Works
Partners



3 x 3

fwd | A+U



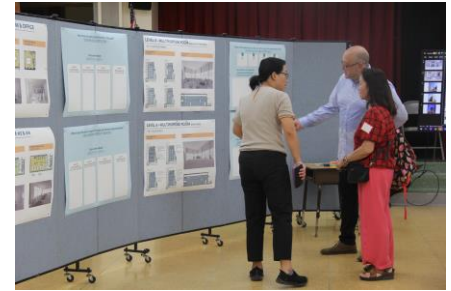
Planning Public Meeting # 1



Public Meeting # 1

Goals

- *Chinatown Connections* project overview and timeline
- Provide update on Park Row SIP improvements
- Present research on Welcome Gateway
- Create opportunities for feedback and discussion with representatives from City agencies



Public Meeting # 1

Format

- Opening presentation followed by gallery boards
- Multiple opportunities for feedback
- Possible virtual component
- Language accessibility

Logistics

- Date: Weeks of 6/10 or 6/17
- Venue
- Duration



DRI Chinatown (2022)

Park Row SIP Update





Park Row

Manhattan Community Board 3

May 14, 2024



NYC DOT Public Realm



Community Partnership + Engagement



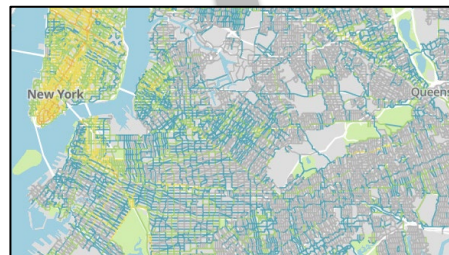
Open Streets



Crossings + Intersections



Dynamic Curb + Corridor Strategies



Comprehensive Planning + Policy



Equity Focused Maintenance



Programming + Concessions



Premier Public Spaces

Chinatown Connections

With \$11.5M in DOS grants, NYC DOT is contributing an additional \$44.3M in City Capital for a total project budget of \$55.8M

The City's project scope includes 3 major components (*state funding in brackets*):

1. Renovating Kimlau Square (\$5M)

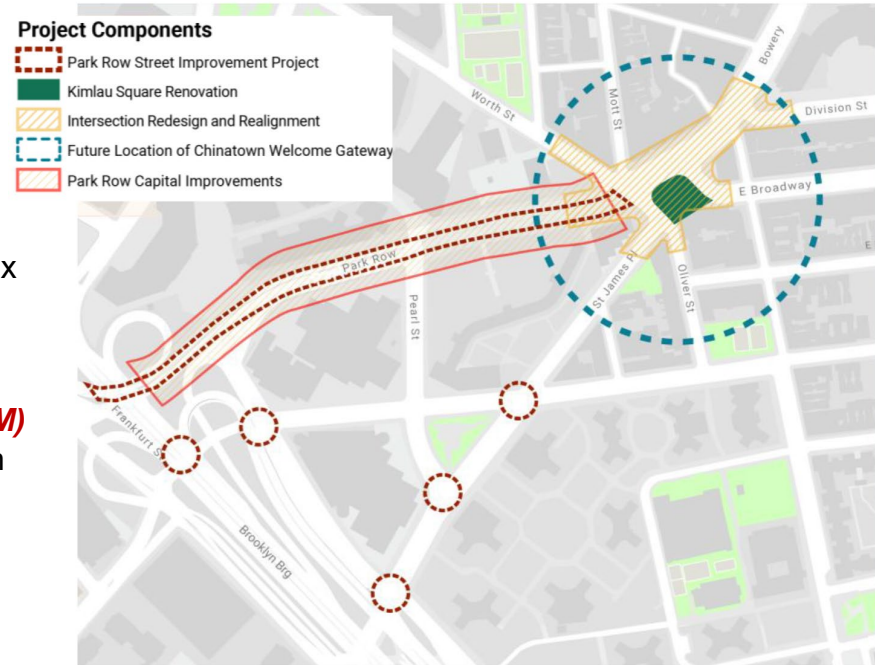
Expand public space at Kimlau Square to support a broader mix of community events, draw visitors into the neighborhood, and provide open space in the heart of the community.

2. Beautifying the Park Row Connection to Chinatown (\$4M)

Implement a Street Improvement Project (SIP) in the near-term to beautify and improve accessibility at Park Row from the Brooklyn Bridge to Kimlau Square, while engaging on future capital improvements in the long-term.

3. Creating a Chinatown Welcome Gateway (\$2.5M)

Build a landmark gateway to commemorate the cultural heritage of the area and draw visitors to the neighborhood



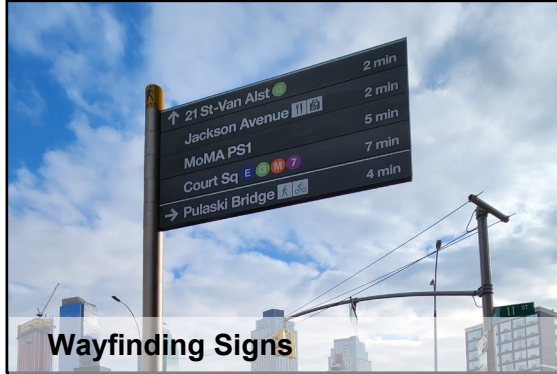
SIP Objectives

- Improve Park Row as a critical pedestrian and bike route connecting lower Manhattan, Chinatown, Brooklyn Bridge, and Brooklyn Bridge Arches.
- Facilitate easier pedestrian access to streets and amenities within the security zone
- Enhance pedestrian safety
- Create welcoming gateways



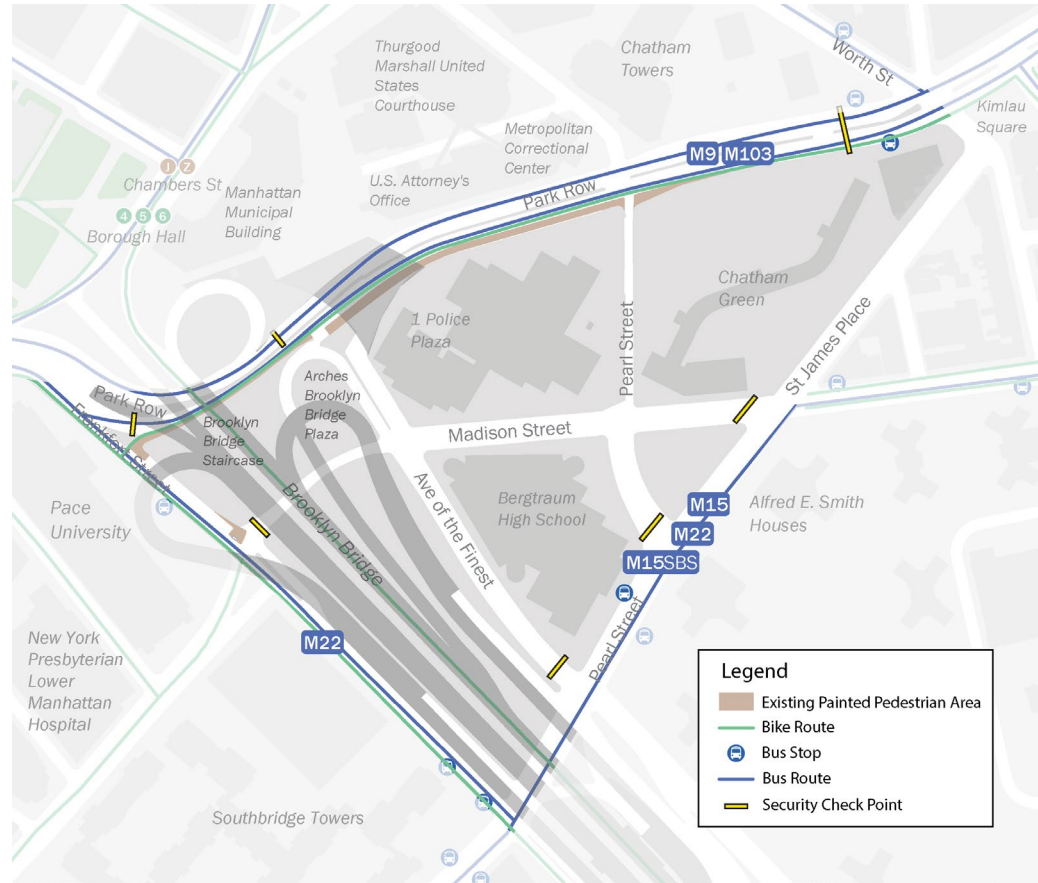
Annual numbers from 2019, Downtown Alliance, 2019, Welcome to Chinatown, HR&A, and 2018, NYC DOT

SIP Toolkit



Project Context

- Park Row closure after 9/11
- Five bus lines serve the area
- In proximity to 4, 5, 6, J, and Z subway lines
- Major residential buildings, including Alfred E. Smith Houses, Chatham Green, Chatham Towers, and Southbridge Towers
- Educational institutions, including Pace University and Murry Bergtraum High School
- Civic institutions, including City Hall, Manhattan Municipal Building, One Police Plaza, Thurgood Marshall United States Courthouse, and U.S. Attorney's Office
- Tourist attractions and neighborhood amenities, including Brooklyn Bridge, Chinatown, and Arches Brooklyn Bridge Plaza
- New York-Presbyterian Lower Manhattan Hospital



Recent Outreach Summary

Chinatown Connections virtual and in-person workshops: summer, 2023

- There was general consensus for bike and pedestrian improvements
- Kimlau Square identified as a priority

SIP on-street workshops: April 17 and May 4, 2024

- Participants generally supported proposed improvements that make the area safer and more accessible
- Requests to address conflicts between bikes and pedestrians and improve bus amenities.
- Strong interests in Kimlau Square redesign updates








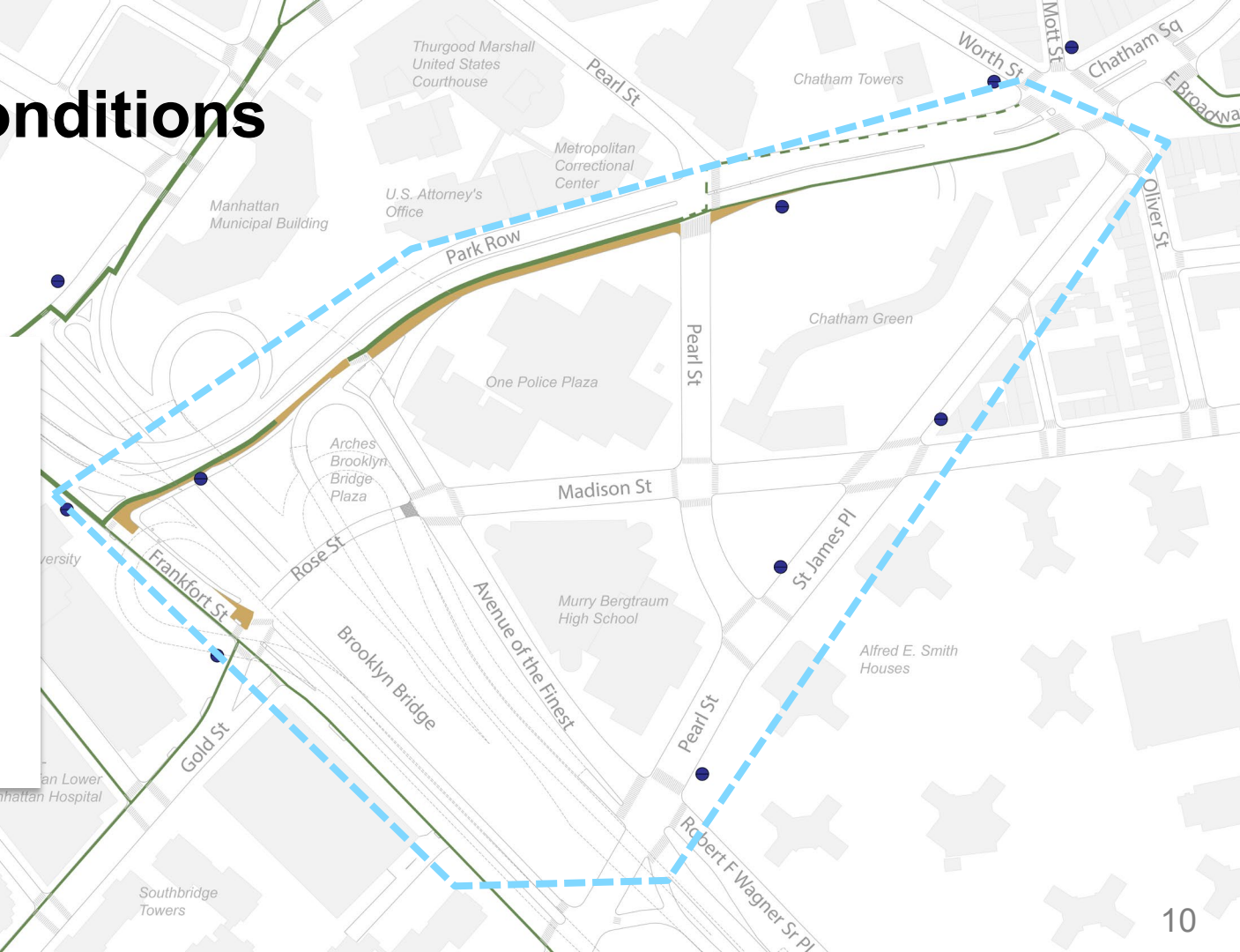
Existing Conditions



Existing Conditions

Legend

-  Painted Pedestrian Space
-  Two-way Bike Lane
-  One-way Bike Lane
-  Project Scope
-  Wayfinding Signs



Insufficient and Unsafe Pedestrian and Bike Access



Insufficient Shared Space



Narrow and Obstructed Sidewalk



Long Crossing Distance



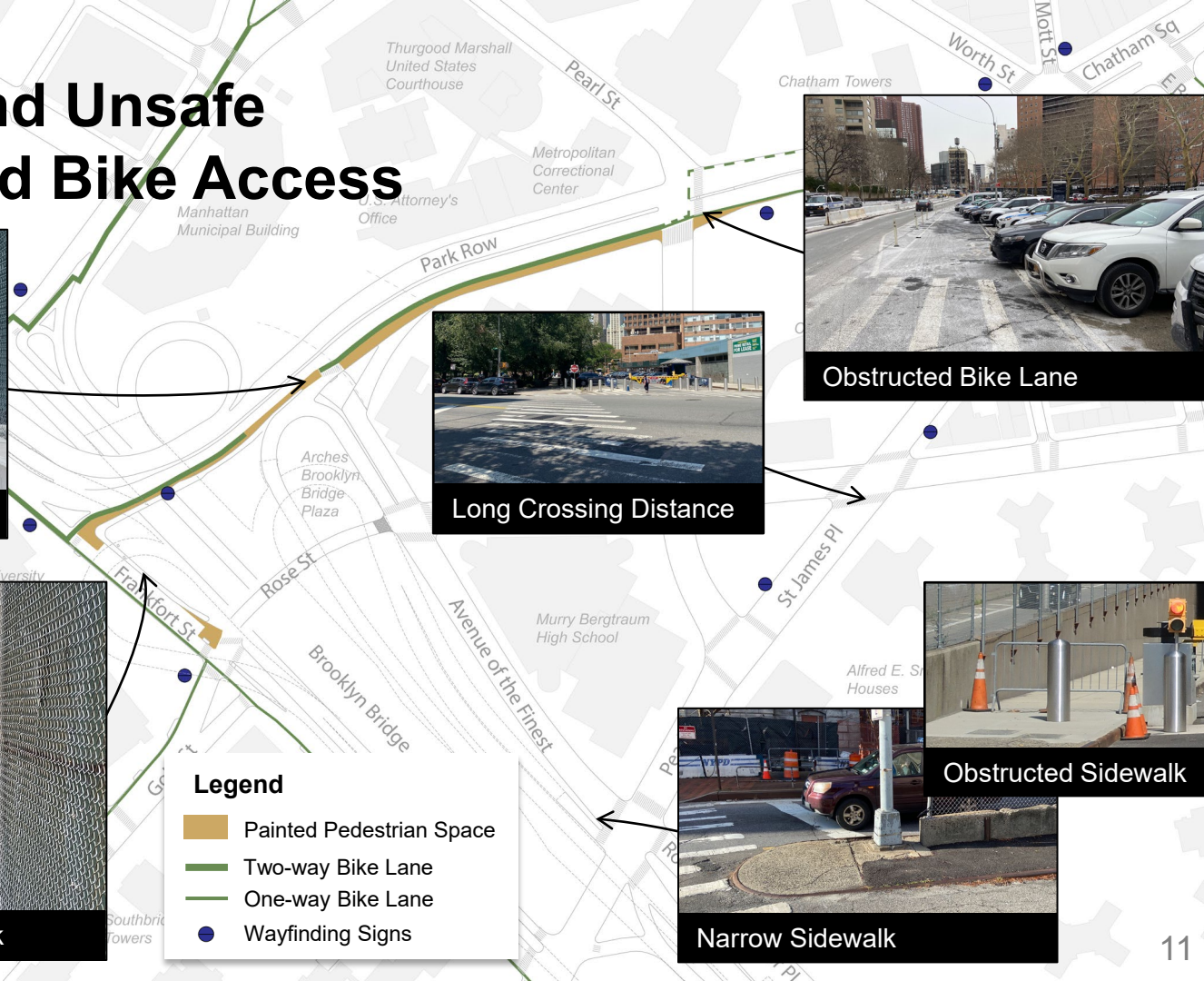
Obstructed Bike Lane



Obstructed Sidewalk



Narrow Sidewalk



Confusing to Navigate

Legend

- Painted Pedestrian Space
- Two-way Bike Lane
- One-way Bike Lane
- Wayfinding Signs



Lack of Wayfinding Signs on Park Row



Existing Wayfinding Signs Not Visible from Park Row Entrance

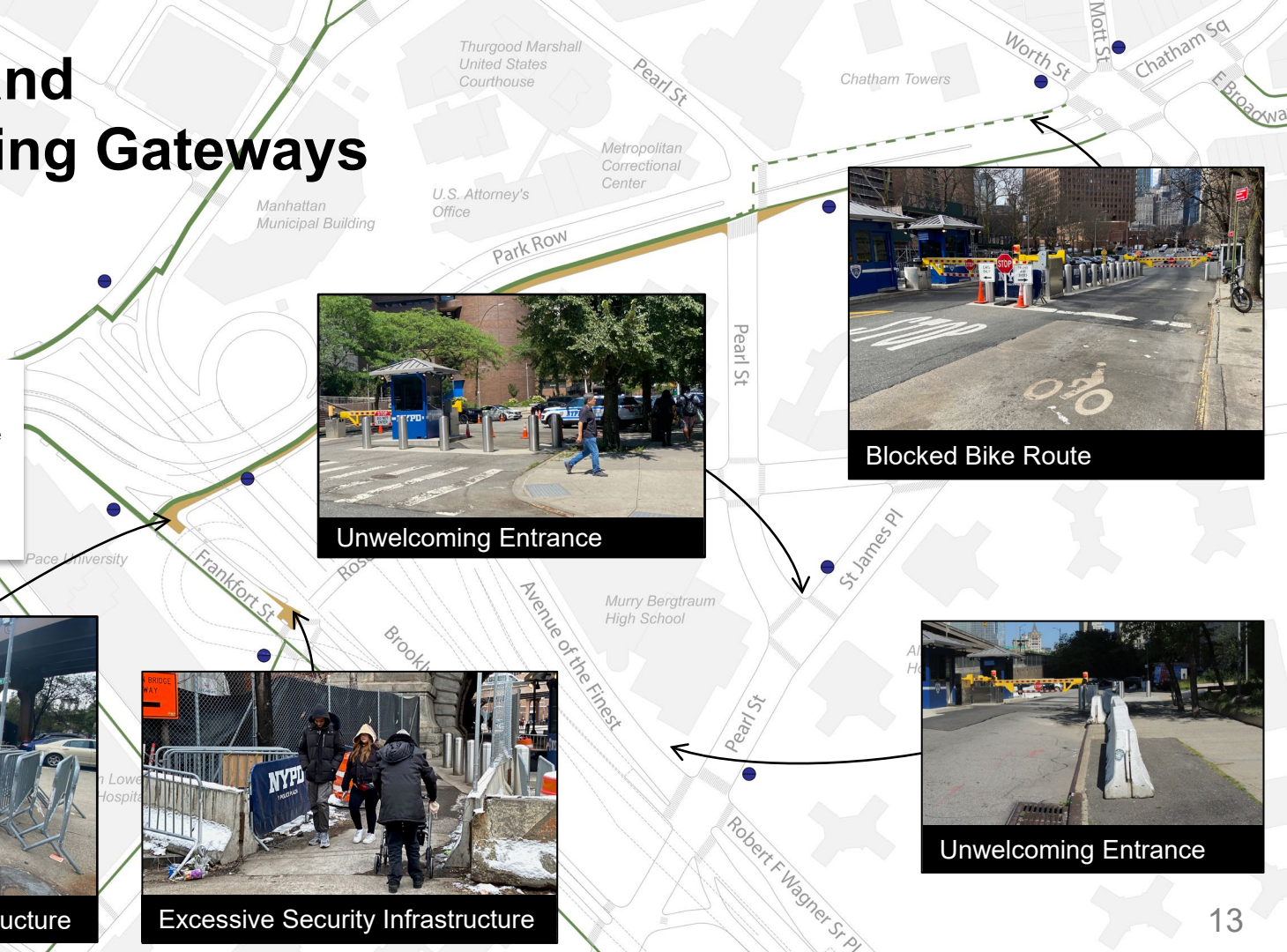


Lack of Wayfinding Signs in Security Zone

Cluttered and Unwelcoming Gateways

Legend

- Painted Pedestrian Space
- Two-way Bike Lane
- One-way Bike Lane
- Wayfinding Signs



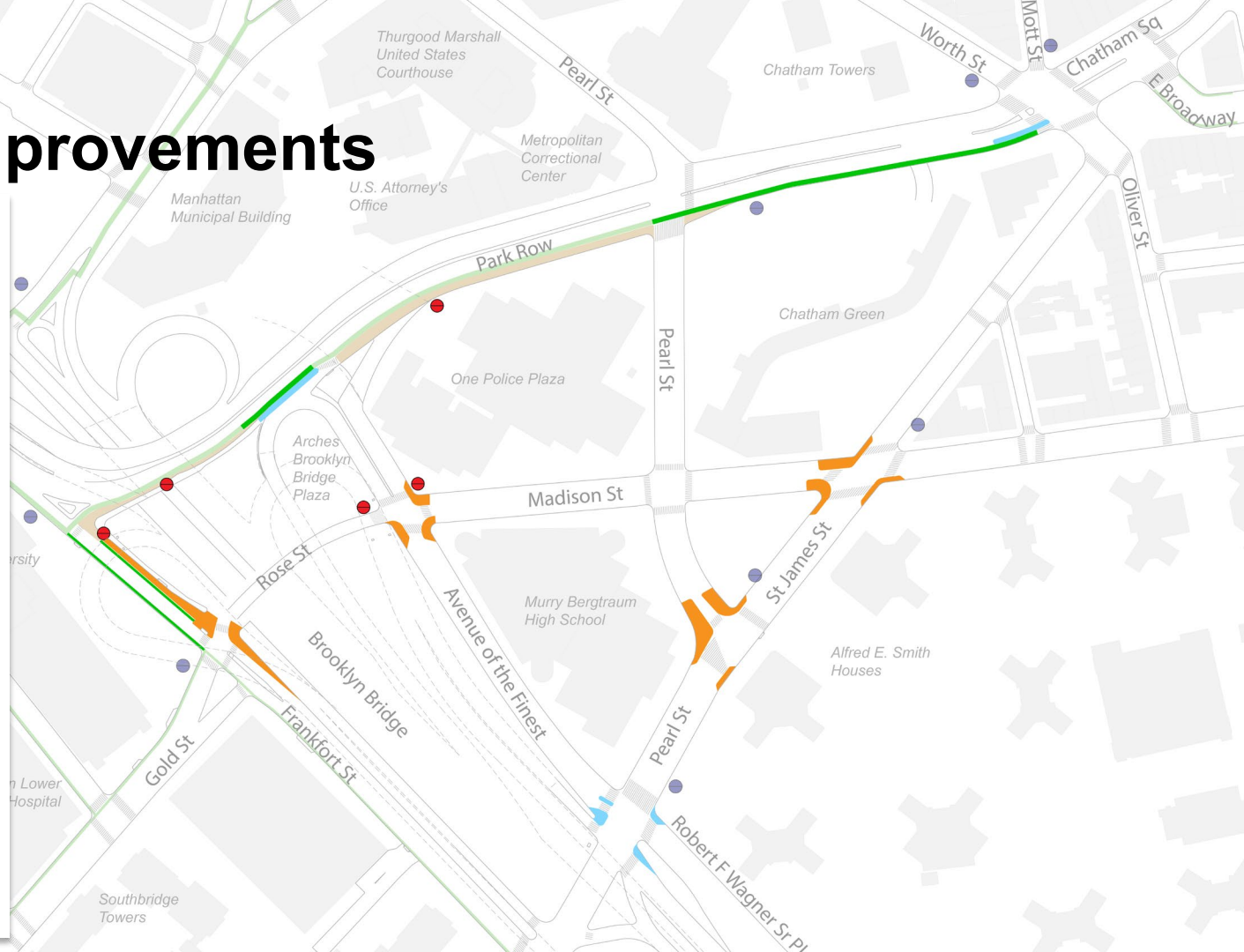
Proposal

2

Proposed Improvements

Legend

- Proposed painted pedestrian space
- Proposed concrete
- Proposed/Upgraded Two-way Bike Lane
- Proposed/Upgraded One-way Bike Lane
- Proposed Wayfinding Signs
- Existing painted pedestrian space
- Existing Two-way Bike Lane
- Existing One-way Bike Lane
- Existing Wayfinding signs



Beautifying the Park Row Connection to Chinatown NYC DOT Art

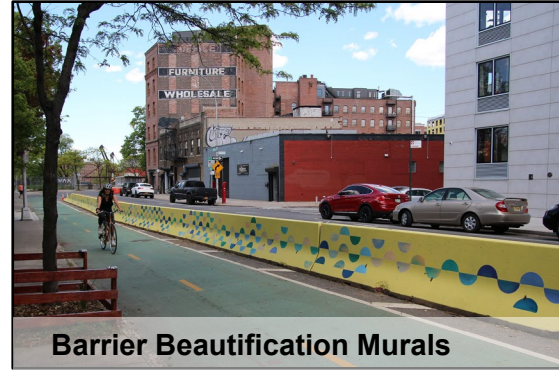
- NYC DOT Art will commission site-specific temporary art projects on up to four proposed SIP sites
- An open call (RFQ) was live April 9 to May 5 and received 165 submissions
- The artist selection process will be a multi-stage process that will include internal NYC DOT units and external stakeholders
- Selected artists matched with final SIP sites in June and engagement with the local community to follow
- Artworks will be installed in late summer and fall



Examples of Temporary Art Treatments



Asphalt Art Murals



Barrier Beautification Murals



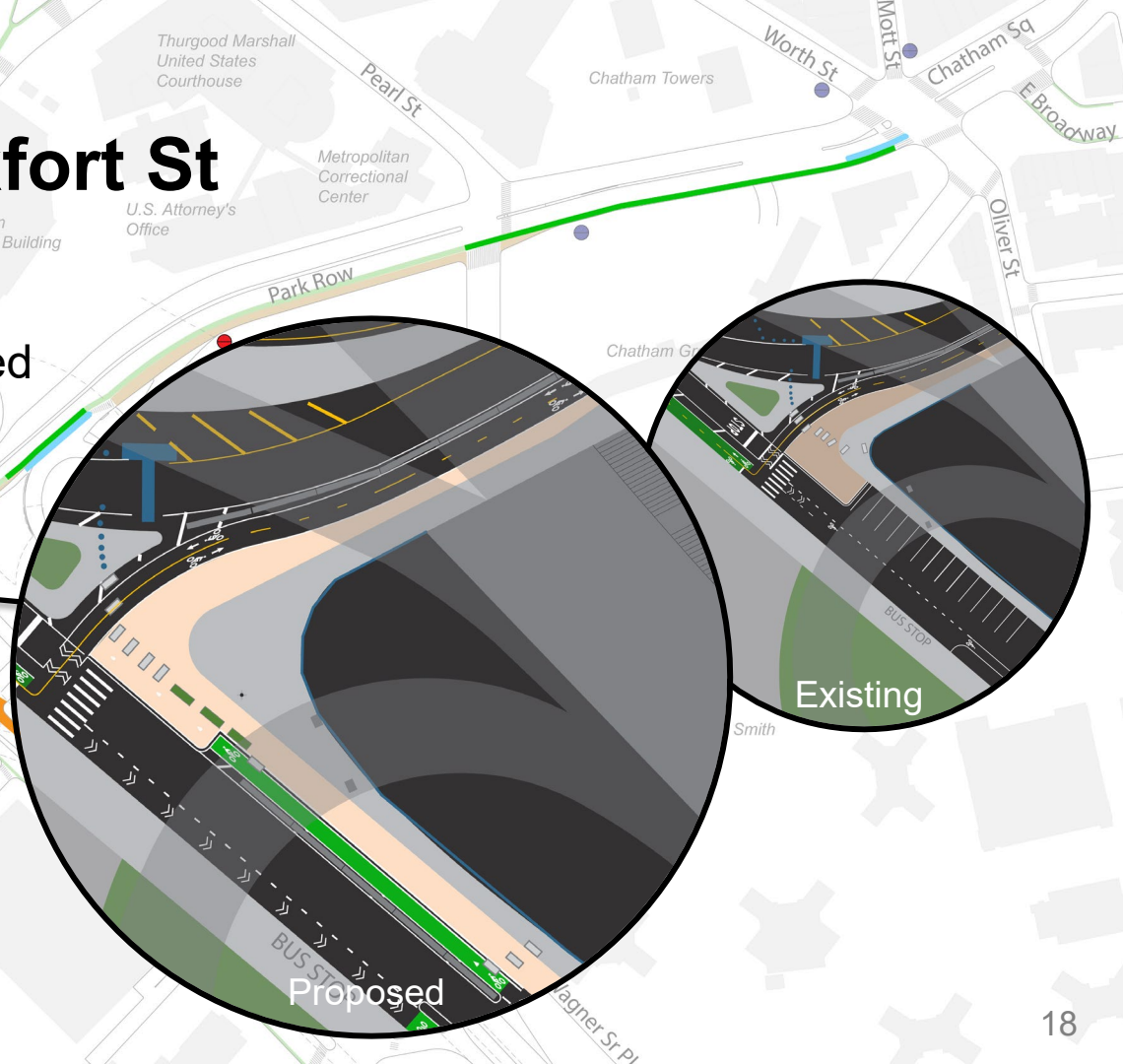
Fence Interventions



Digital Illustrations for Signage

Park Row and Frankfort St

- Painted sidewalk expansion
- New northwest bound protected bike lane on Frankfort St
- Reorganize French barricades and sugar cubes
- Relocate fences to allow more sidewalk space
- New wayfinding sign
- Fence/barrier beautification
- Repurpose 21 AVO parking spaces
- DOT Art opportunity

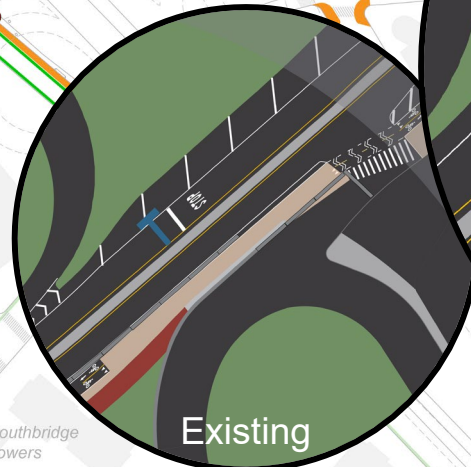


Park Row Pinch Point

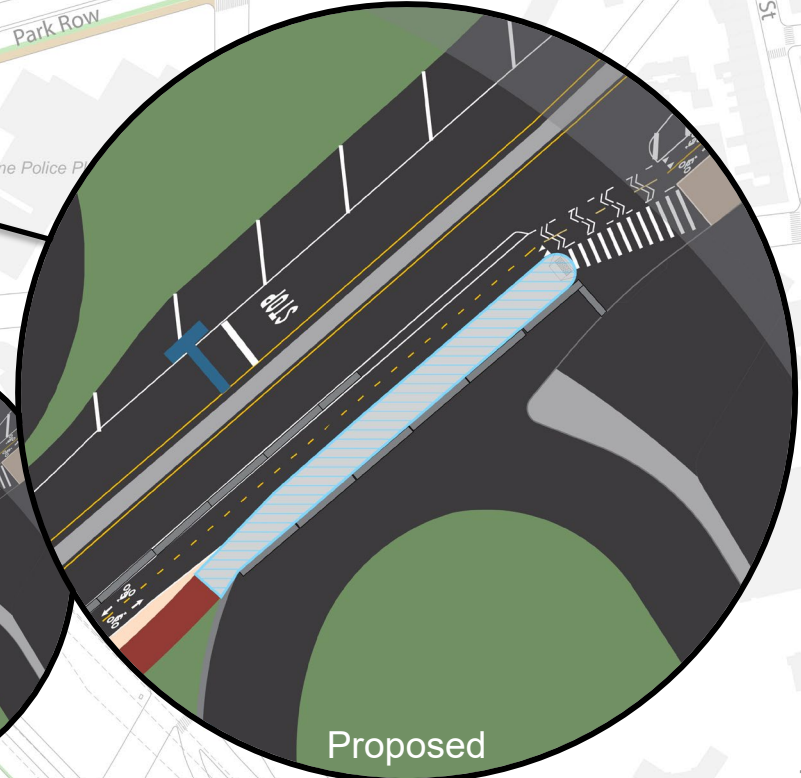
- New ADA-compliant concrete sidewalk
- Dedicated two-way bike lane
- Relocate fences to allow space for new sidewalk



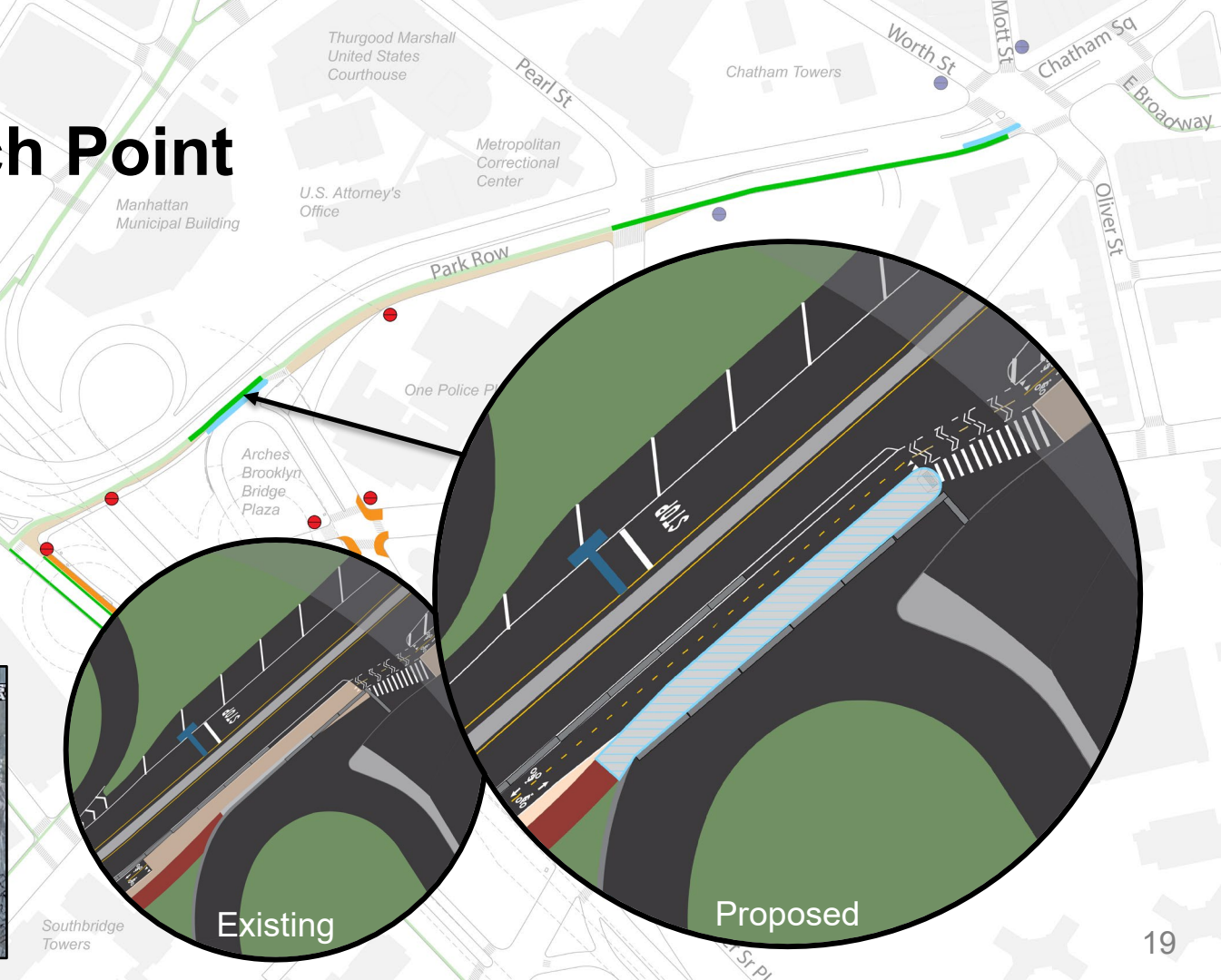
Southbridge Towers



Existing

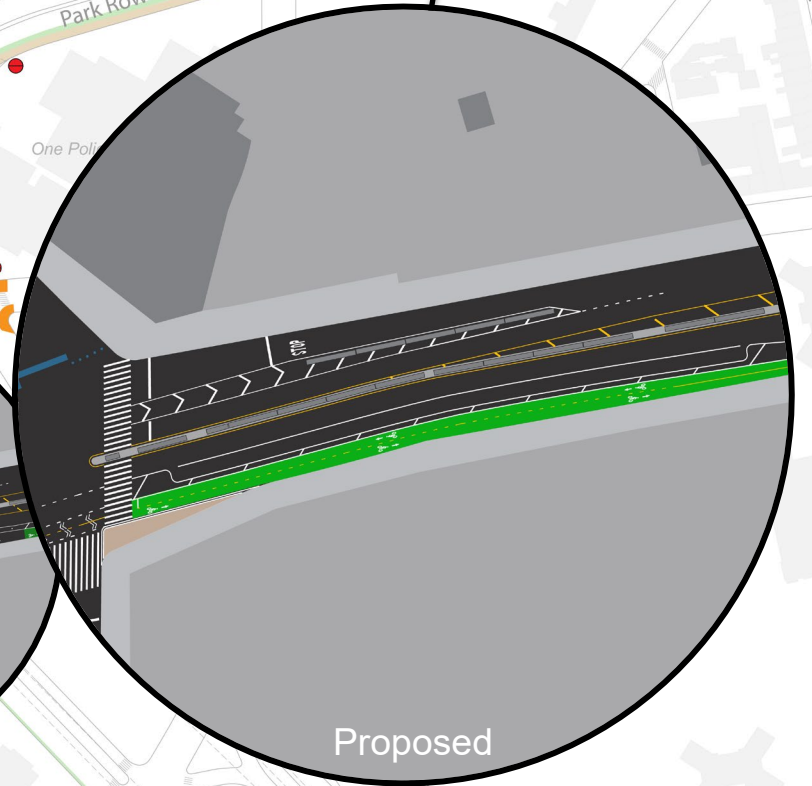
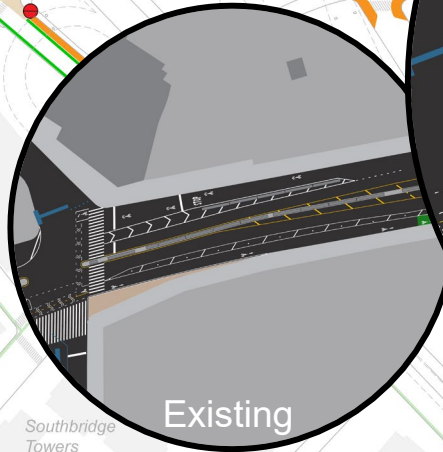


Proposed



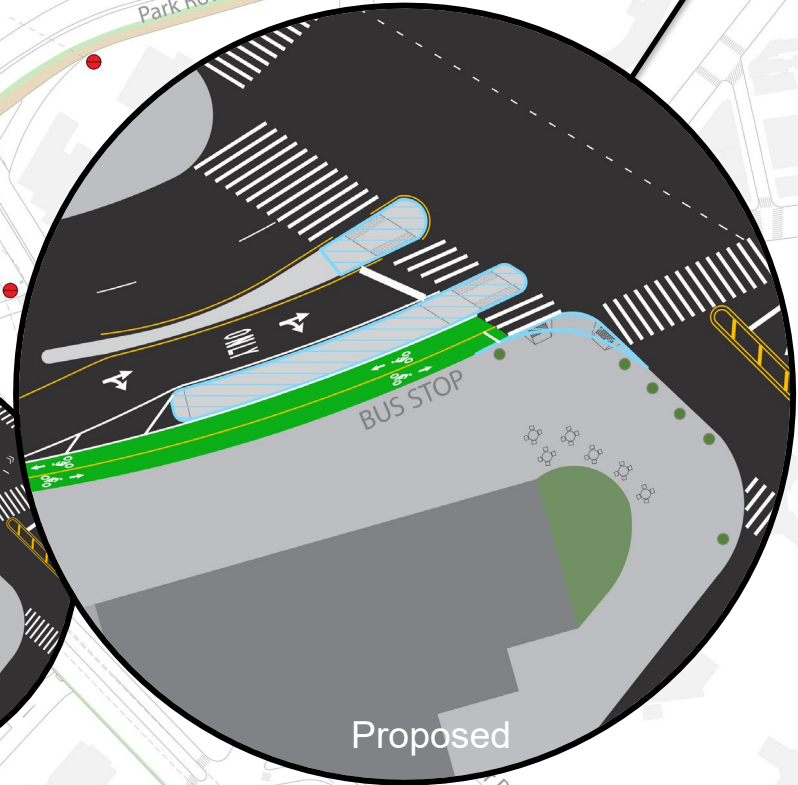
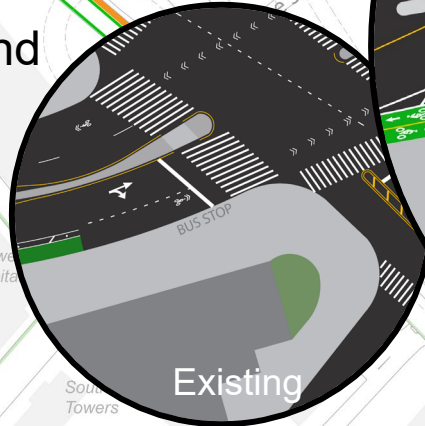
Park Row and Pearl St

- Consolidated two-way bike lane on south curb
- Add 15 parking spaces
- Coordinated with NYPD to reorganize French barricades and parking
- DOT Art opportunity



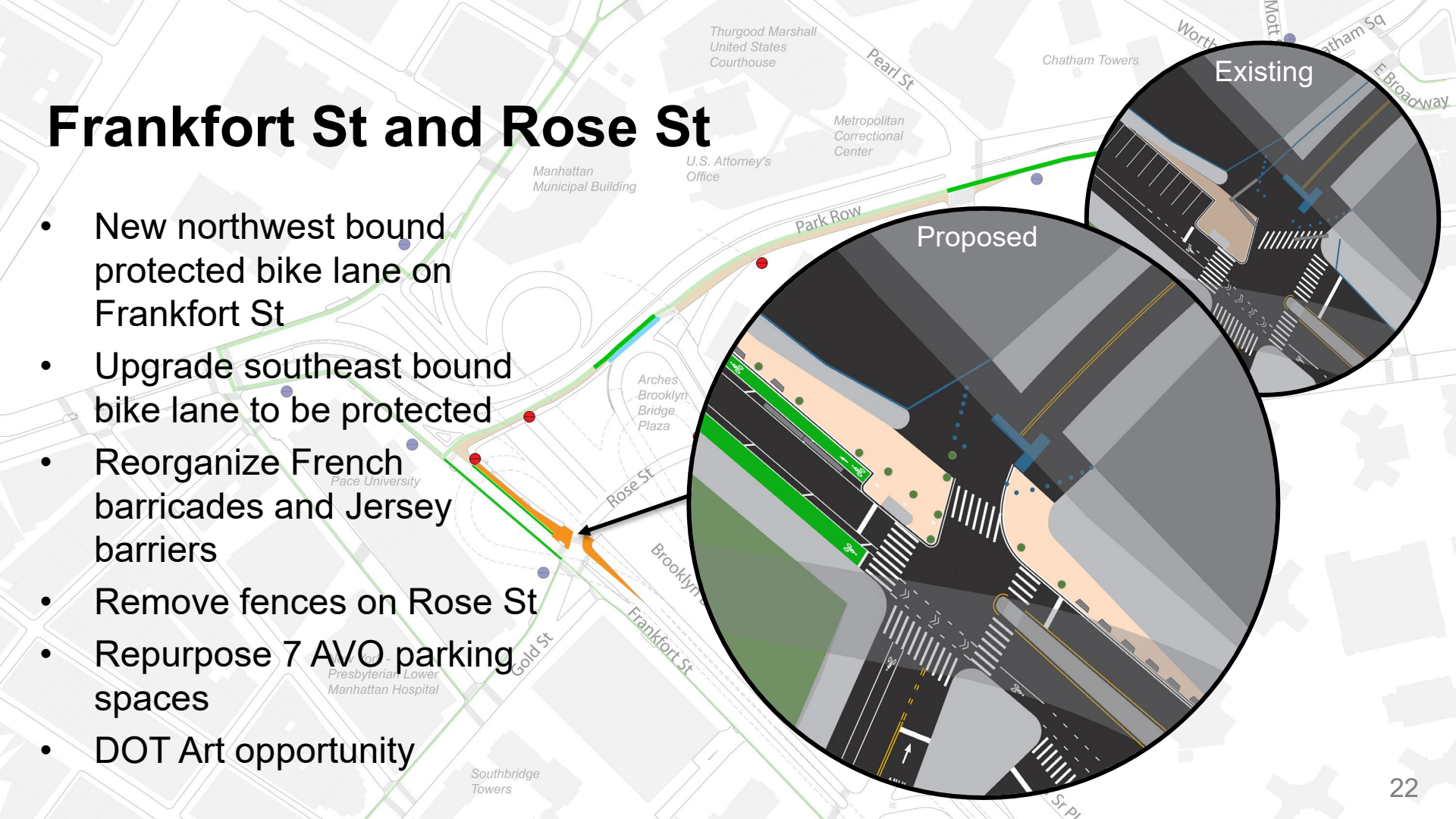
Park Row and Worth St/Oliver St

- Consolidated two-way bike lane on south curb
- New bus boarding island
- New public seating area at Park Row and Oliver St



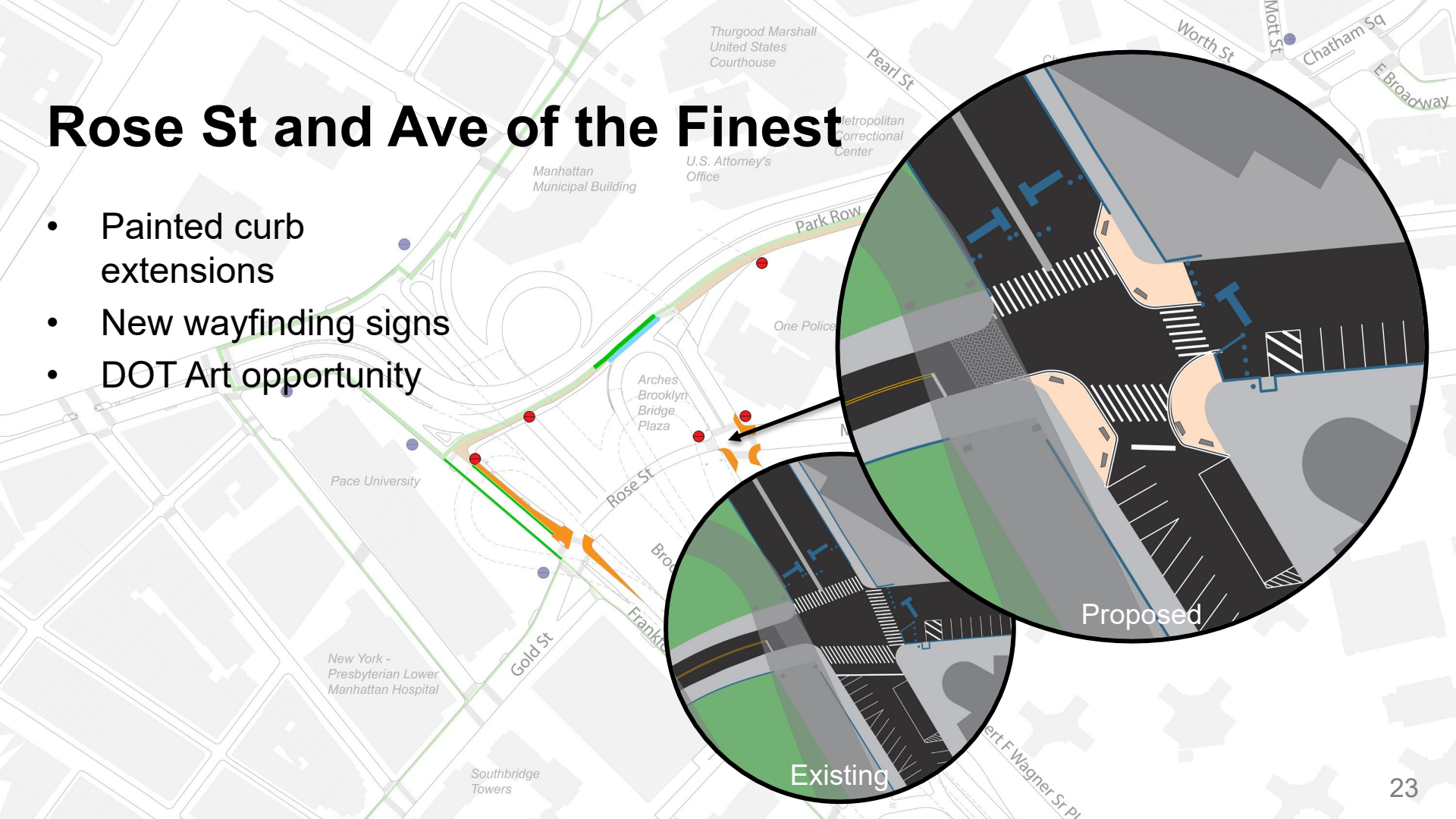
Frankfort St and Rose St

- New northwest bound protected bike lane on Frankfort St
- Upgrade southeast bound bike lane to be protected
- Reorganize French barricades and Jersey barriers
- Remove fences on Rose St
- Repurpose 7 AVO parking spaces
- DOT Art opportunity

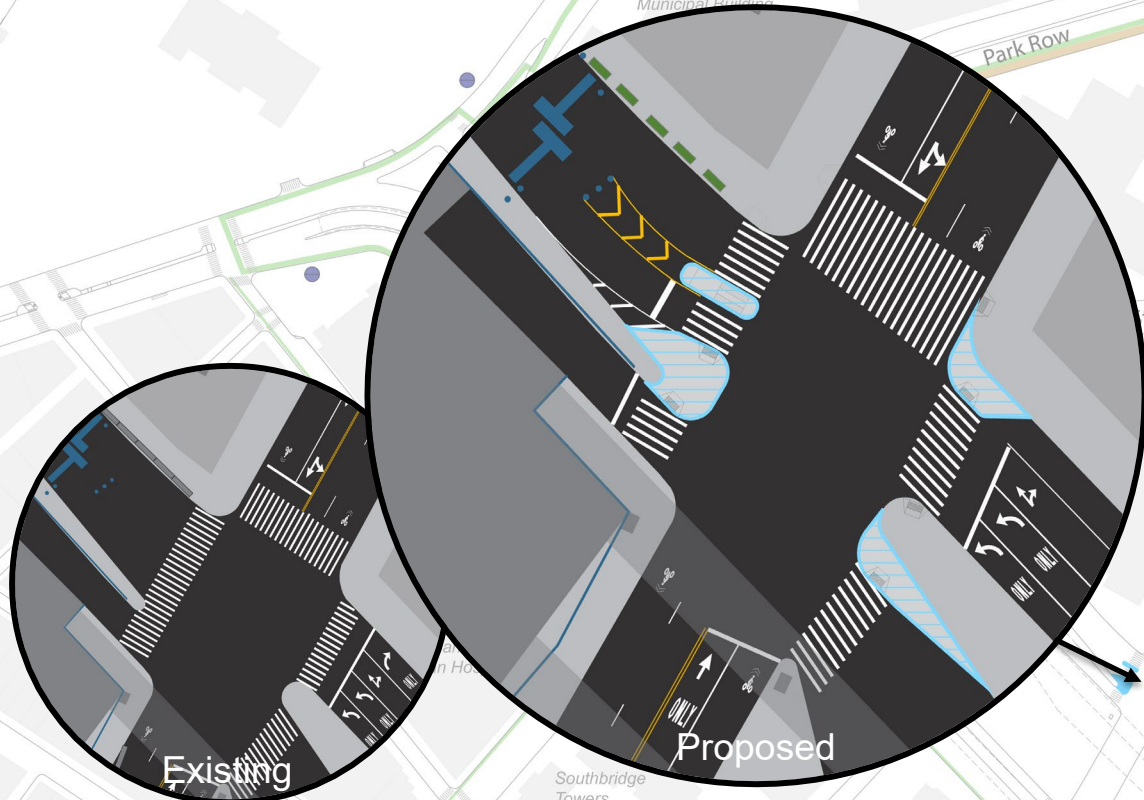


Rose St and Ave of the Finest

- Painted curb extensions
- New wayfinding signs
- DOT Art opportunity

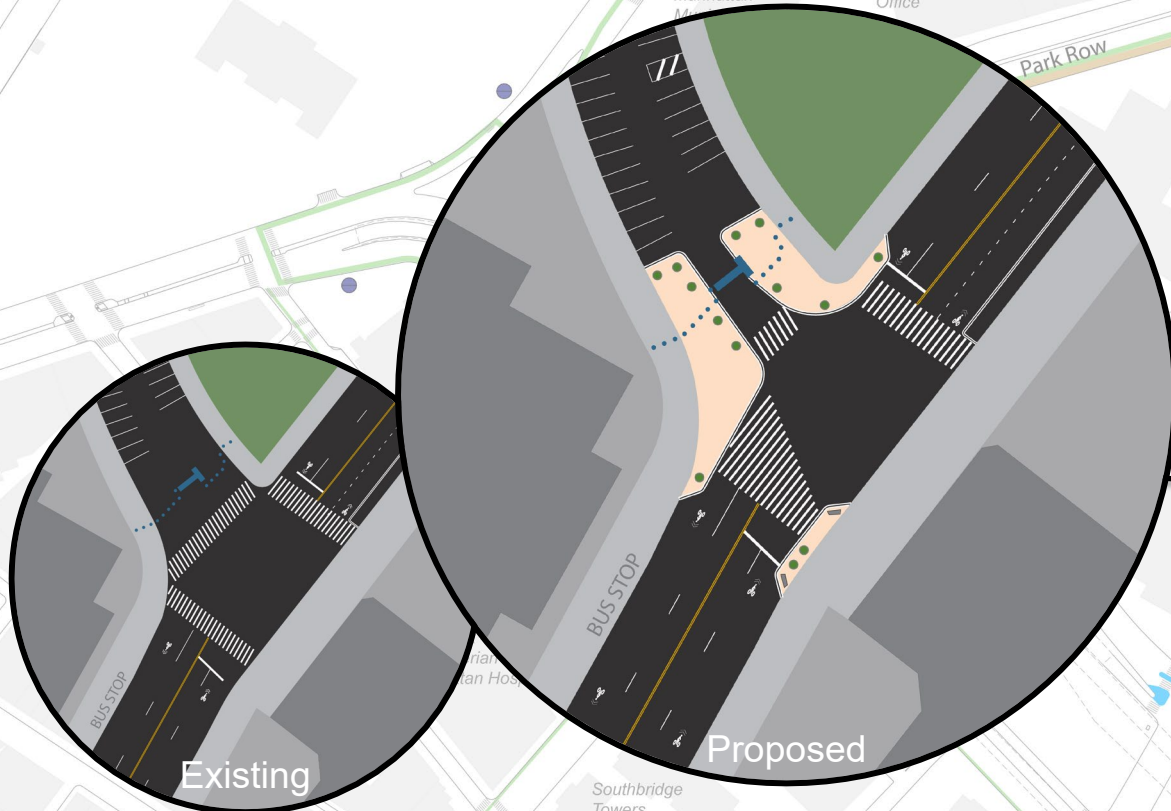


Pearl St and Ave of the Finest



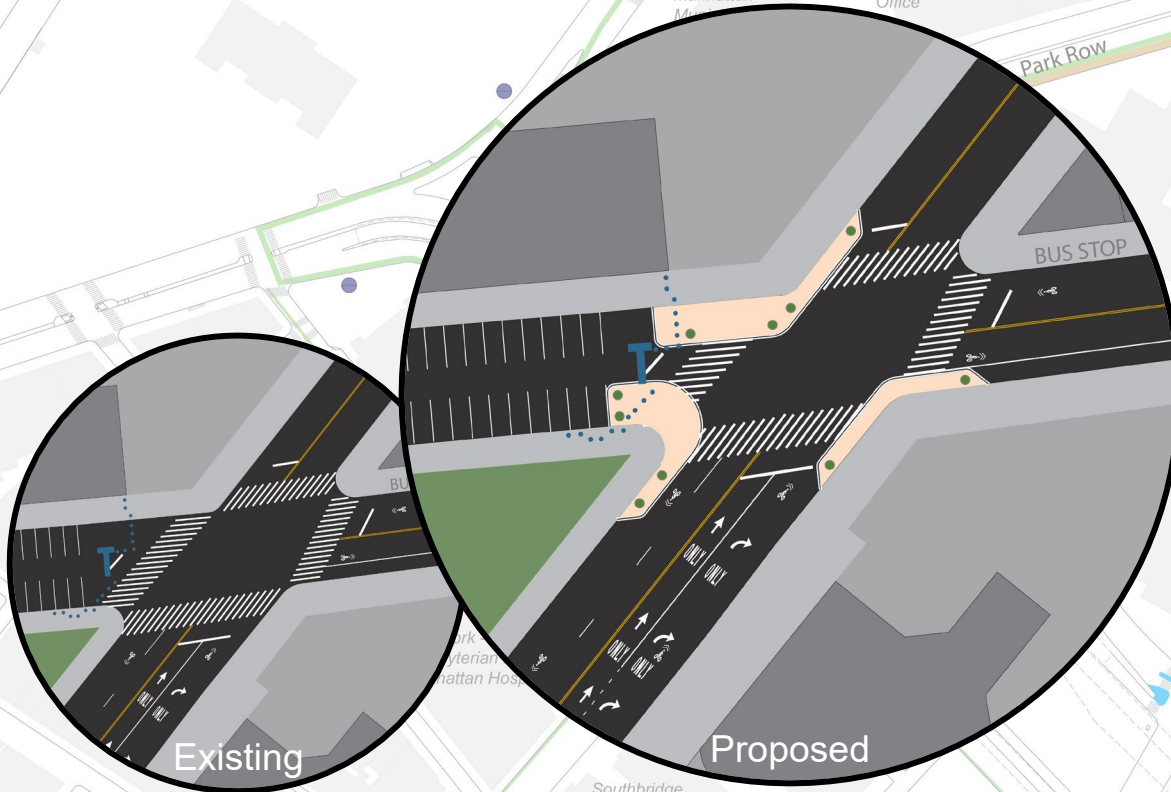
- Concrete curb extensions
- Pedestrian island
- Replace Jersey barriers with security planters

Pearl St and St James Pl



- Painted curb extensions
- DOT Art opportunity

Madison St and St James Pl



- Painted curb extensions
- Signal timing improvement (Leading Pedestrian Interval)
- DOT Art opportunity

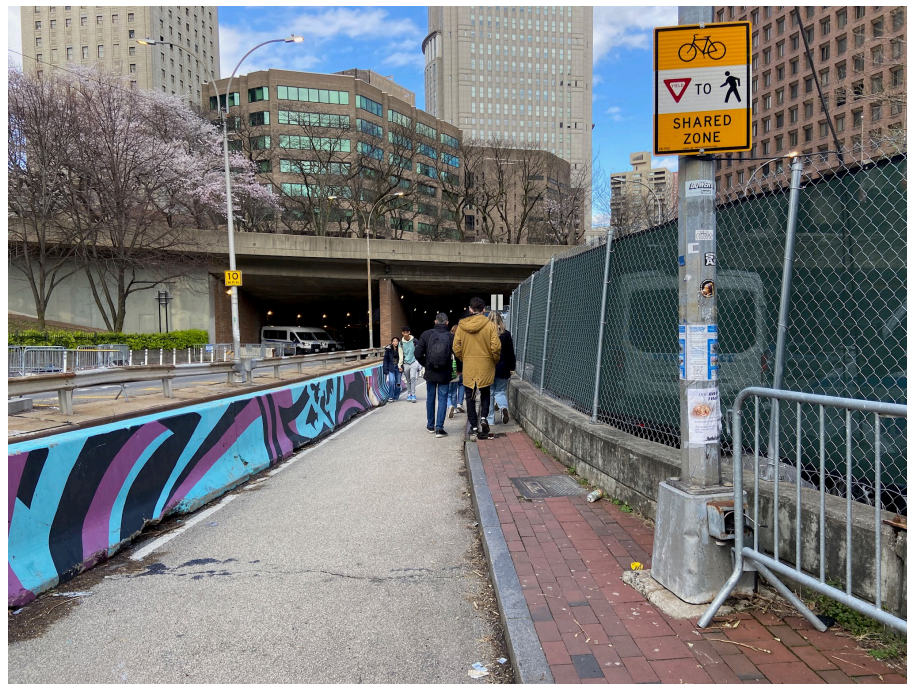
Benefits

- Improves pedestrian and bike access to Park Row
- Creates welcoming gateways
- Improves wayfinding
- Provides safer and shorter pedestrian crossings
- Calms vehicle turns



Next Steps

- Ongoing community engagement and agency coordination
- SIP implementation
- Art design and implementation



Thank You!

Questions?



NYCDOT



nyc_dot



nyc_dot



NYCDOT

Park Row Discussion w/ NYPD

Coordination with NYPD

Ongoing coordination between Project Team and NYPD

- Recent Coordination Meetings:
 - **April 9th** meeting with Deputy Commissioner Stewart
 - **April 17th** meeting with 5th Precinct, One Police Plaza Community Affairs, and One Police Plaza Operations/Security
- Immediate Actions:
 - NYPD has cleared parked vehicles from sidewalk and bike lane in front of Chatham Green
 - NYPD has committed to tightening up barriers through Park Row
- Questions from Working Group:
 - How will NYPD change how they use Park Row once the project is implemented?
 - What is the rationale of designating Park Row as a high security area? How does this designation impact the project? Will this designation change after project implementation?
 - How does NYPD plan to address placard abuse and for-hire vehicles idling on Park Row?



Next Steps

- May
 - CB 3 Transportation Committee (5/14)
 - CB 1 Executive Committee (5/16)
 - Gateway Subgroup # 2
- June
 - Chinatown Connections Design RFP Release
 - Park Row SIP Artist Selection
 - Public Meeting # 1
- July
 - CCWG # 3

Thank you!